



## 2009 digiChart Hardware and Software Requirements

---

This document details the recommended computer hardware and software to access both digiChart Practice (EMR and PMS) and digiChart OB-GYN (EMR only), including workstations used for scanning or digital photography. digiChart clients and prospects should refer to this document when assessing their current hardware and software for suitability and to provide guidance for purchases with respect to new, replacement or upgraded hardware.

***Although hardware that does not meet the following recommendations may well run the digiChart application(s) successfully, digiChart will perform best on machines that meet or exceed these guidelines!!!***

### ■ **Hardware and Operating Systems**

- ✓ **64 bit** Vista and XP **are not** currently supported
- ✓ Processor: Pentium IV equivalent or higher; 2 GHz or greater
- ✓ **Memory**
  - XP (any 32 bit edition) with Service Pack 2 or later
    - 2 GB for stations without scanning
    - 3 GB for scanning workstations
  - Vista (Home, Premium or Business, 32 bit edition: Ultimate is not yet certified for digiChart EMR)
    - 3 GB for stations without scanning
    - 4 GB for scanning workstations
- ✓ USB 2.0 Connections
- ✓ Gigabit physical Network Adapter Card
- ✓ 802.11 Wireless network adapter

### ■ **Scanner used within the digiChart application(s)**

- ✓ DIRECTLY connected, non-network device; networked scanners are not currently supported
- ✓ TWAIN/TWAIN32 compliant Flatbed or Sheet-Fed
- ✓ Singularly purposed; NO multi-document centers supported

### ■ **Printers used to print from digiChart application(s)**

- ✓ Most printers, networked or directly connected, that work with the host system should print from within digiChart as well

### ■ **Monitors**

- ✓ Any monitor compatible with your PC, laptop or tablet will work
- ✓ Set the screen resolution that is best for your monitor. This may be "1024 x 768" or it may be something larger. Smaller resolution may work but would require horizontal, as well as vertical, scrolling within the digiChart application.

### ■ **PC Settings**

- ✓ Windows Updates set to Enabled
- ✓ Disable all Toolbars, such as Google, Yahoo, MySearch, etc
- ✓ Disable full security suites, antivirus software is all that is required.

### **Additional Information:**

The end-user needs to be an **Administrator** (locally) to install the digiChart browser and configure the IE settings in order for digiChart to work properly. Rights can be reduced to a local user once the application is installed and functionality has been confirmed.

All users that will utilize digiChart on each machine must install the application when logged on, even if a different user has installed digiChart on that machine already. The reason for this



## 2009 digiChart Hardware and Software Requirements

---

requirement is that the digiChart EMR 'smart client' Application is profile based and specific to the profile that is currently logged on.

**\*\*\*Note:** For each end user logging into the machine, the *Additional Information* above must be adhered to before digiChart will function as intended**\*\*\***

### Software Components for Microsoft XP SP 2 ONLY

#### .NET Framework 1.0

<http://www.microsoft.com/downloads/details.aspx?FamilyId=D7158DEE-A83F-4E21-B05A-009D06457787&displaylang=en>

#### .NET Framework 1.0 SP3

<https://www.microsoft.com/downloads/details.aspx?familyid=6978D761-4A92-4106-A9BC-83E78D4ABC5B&displaylang=en>

#### .NET Framework 1.1

<http://www.microsoft.com/downloads/details.aspx?familyid=262D25E3-F589-4842-8157-034D1E7CF3A3&displaylang=en>

#### .NET Framework 2.0

<http://www.microsoft.com/downloads/details.aspx?familyid=0856eacb-4362-4b0d-8edd-aab15c5e04f5&displaylang=en>

#### .NET Framework 3.0

<http://www.microsoft.com/downloads/details.aspx?FamilyID=10CC340B-F857-4A14-83F5-25634C3BF043&displaylang=en>

#### MS XML Parser 4.0 SP2

<http://www.microsoft.com/downloads/details.aspx?familyid=3144b72b-b4f2-46da-b4b6-c5d7485f2b42&displaylang=en>

Download File name: **msxml.msi**

#### MS XML Parser 6.0

<http://www.microsoft.com/downloads/details.aspx?FamilyID=993C0BCF-3BCF-4009-BE21-27E85E1857B1&displaylang=en>

Download File Name: **msxml6.msi**

**\*\*\*Note:** *These programs may already be installed. You can verify they are already installed by:*

- 1) Go to Start button
- 2) Click Control Panel
- 3) Select Add/Remove Programs
- 4) Review the list alphabetically
- 5) If not installed, click the link(s) above

### ■ Software Components for Microsoft XP SP 2 and VISTA

#### SCRIPT X PLUGIN

## 2009 digiChart Hardware and Software Requirements

<http://www.meadroid.com/scriptx>

**\*\*\*Note:** Scroll to the bottom of the page. Click "HERE" where it says "Users can upgrade their computers to the current version of ScriptX HERE". On the next page, click the CONTINUE button underneath the Automatic section. **\*\*\***

### ADOBE READER 9.0

<http://get.adobe.com/reader/>

**\*\*\*Note:** Deselect the "Free Google Toolbar" prior to clicking the DOWNLOAD button. **\*\*\***

*These programs may already be installed. You can verify they are already installed by:*

- 1) Go to Start button
- 2) Click Control Panel
  - a. For Microsoft XP, Select Add/Remove Programs
  - b. For Microsoft Vista, Select Programs and Features
- 3) Review the list alphabetically
- 4) If not installed, click the link(s) above

### ■ Software Components for Microsoft VISTA ONLY

The following feature must be enabled before full functionality is realized.

**Start>Control Panel>Programs and Features>Windows Features>Enable** Microsoft .NET Framework 3.0 and all three sub category check boxes.



### Vista Compatibility Pack

<http://www.microsoft.com/downloads/details.aspx?FamilyId=AE2F819D-C33D-48DB-A7E3-62EEF7C1F7C2&displaylang=en>

### ■ Internet Explorer and Settings

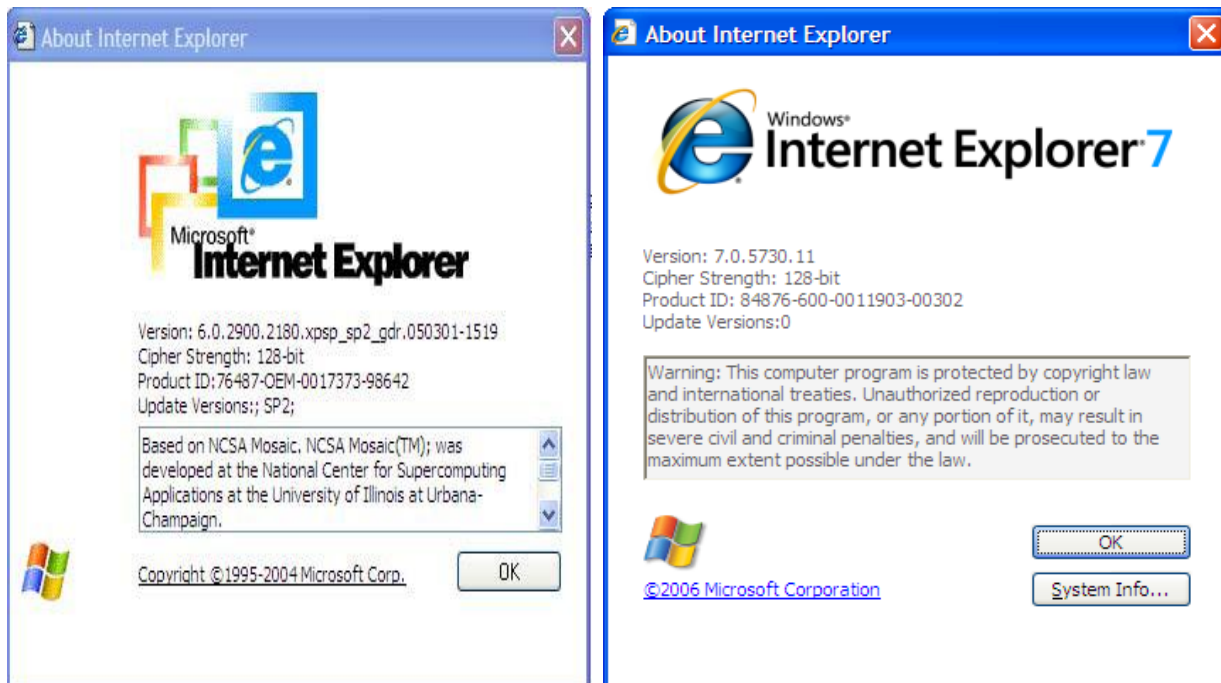
- Microsoft Internet Explorer 7.0 '**preferred**'
- Microsoft Internet Explorer 6.0, SP 2

## 2009 digiChart Hardware and Software Requirements

---

PCs and Tablets must have the following Internet Explorer and Display settings *prior* to using the digiChart OB-GYN application

1. Launch the Internet Explorer web browser
2. Left click the HELP menu on the file menu bar (above the icons)
3. Left click ABOUT INTERNET EXPLORER from the drop down menu



4. Version is located on the 1<sup>st</sup> line (ex: Version: **6.0**.2900.2180...)
5. Update Versions is on the 4<sup>th</sup> line (ex: Update Versions;; **SP2**;) )
6. select OK to close the dialog box

If the PC or tablet is not on version 6.0 SP2 it can be updated by following this link <http://www.microsoft.com/windowsxp/sp2/default.msp>. Be sure to read all instructions and consult your IT staff before downloading and upgrading.

If the PC or tablet is not on version 7.0 it can be updated by following this link <http://www.microsoft.com/windows/downloads/ie/getitnow.msp>. Be sure to read all instructions and consult your IT staff before downloading and upgrading.

### Follow these steps to validate/update Internet Explorer settings:

1. Open Internet Explorer
2. Select Tools from the file menu bar
3. Select Internet Options from the drop down menu

## 2009 digiChart Hardware and Software Requirements

---

Select the **General** tab to validate/update Refresh timing of internet web pages/sites

1. Look in the Temporary Internet Files section
2. Left click the Settings button
3. "Every Visit to the Page" should be selected (marked with a green dot)
4. Select the OK button

Remain on the General tab to clean up cookies and temporary internet files – **should be done at least once a week**

5. Select the Delete Cookies button and let it run (hour glass icon will disappear)
6. Select the Delete Files button and let it run (hour glass icon will disappear)
7. Select OK at the bottom when completed
8. Close Internet Explorer and re-launch to use digiChart

Select the **Security** tab to validate/update **Trusted Sites** settings

1. Left click the Trusted Sites icon
2. Select the Sites button
3. In the box "Add this Web site to the zone:" type in "https://\*.digiChart.com" (without the quotes) if not there already
4. Select the ADD button
5. Click the OK button

Remain on the Security tab to validate/update **ActiveX** controls settings

1. Click **Trusted Sites** icon
2. Select the Custom Level button at the bottom
3. Scroll down until you see the section "ActiveX controls and plug-ins"
4. Be sure **every** option in this section is set to "Enabled"
5. Stop at Downloads section
6. Select the OK button at the bottom

Select the **Privacy** tab to add digiChart to allowed sites for Pop-up windows

1. Click on the Sites button
2. If you do not see digiChart.com in the allowed site lists, type in digiChart.com and click ALLOW
3. Click OK
4. Click on Settings Button
5. In the "address of website to allow" dialog box, type in \*.digiChart.com and click Add
6. Click Close
7. Click OK

Select the **Advanced** tab to validate/update **Script Debugging**

1. Look in the Browsing section
2. Be sure there are check marks in the below 2 items
  - a. Disable Script Debugging (Internet Explorer)
  - b. Disable Script Debugging (Other)
3. Be sure that there is NO check mark in the following item
  - a. Display a notification about every script error
4. Click OK to save all settings

**Thank You for choosing digiChart as your EMR/EMR-PMS solution!!!**